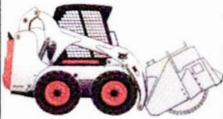


2024 BOBCAT RENTAL RATES

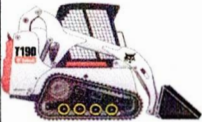
(RATES SUBJECT TO CHANGE WITHOUT NOTICE)



PLANER



WHEEL SAW



DRIVING UNIT

TRENCHER

Tire Loaders	Width	Weight	HP	1/2	Day	Week	4-Week
S450 (1350# Lft.)	68"	5,235	49	\$162	\$215	\$752	\$1880
S62 (1950# Lft.)	68"	6,480	61	\$184	\$245	\$735	\$2205

Hi-FLO Loader	Width	Weight	HP	1/2	Day	Week	4-Week
S770HCAB	74"	9,175	92	\$274	\$365	\$1369	\$3833
T770HCab	80"	10,327	92	\$412	\$549	\$2059	\$5216
T770HCab w/ Forestry Mulcher ( Package )				\$825	\$1099	\$4122	\$11542
T870HCab w/ Forestry Mulcher ( Package )				\$825	\$1099	\$4122	\$11542
Hi Flow Attach:	Mulcher (only) - 60" W			\$413	\$550	\$2063	\$6326
	Mulcher FAE - 72" W			\$413	\$550	\$2063	\$6326
	Cold Planer - (24" W)			\$194	\$259	\$925	\$2627
	Cold Planer - (40" W)			\$221	\$295	\$1032	\$2949
	Stump Grinder - 26" head			\$119	\$245	\$858	\$1975
	Wheel Saw (2.5"W -16"D)			\$194	\$259	\$925	\$2627

Track Loaders	Width	Weight	HP	1/2	Day	Week	4-Week
T450 ** (1400# lift)	60"	6,148	61.1	\$195	\$260	\$975	\$2470
T550 /T62 (1995# lift)	68"	7,633	66	\$210	\$280	\$1050	\$2660
T590 /T64 (2100# lift)	68"	7,870	66	\$217	\$301	\$1060	\$2976
T595 /T66 (2250# lift)	68"	8,000	74	\$259	\$345	\$1294	\$3278
T630Cab (2570# lift)	74"	8,742	75	\$234	\$331	\$1120	\$3207
T76 (4100# lift)	74"	9,440	74	\$257	\$341	\$1195	\$3407
T740/T650 (3200# lift)	80"	10,000	74	\$278	\$371	\$1391	\$3524
T750Cab (3325# lift)	80"	10,327	85	\$272	\$361	\$1265	\$3607
T770cab (3475# lift)	80"	10,327	92	\$260	\$368	\$1251	\$3589
T870HCab (3525# lift)	84"	12,678	99	\$412	\$549	\$2059	\$5216
MINI TRACKS	Width	Weight	HP	1/2	Day	Week	4-Week
MT100	45"	3,110	25	\$150	\$200	\$700	\$1800

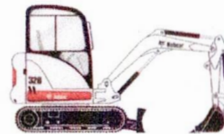
MT Attachments:	Auger w/ Bit	\$79	\$105	\$377	\$949
BUSH HOG	\$100	\$140	\$490	\$1470	
Forks	\$26	\$35	\$100	\$305	
Grapple	\$75	\$100	\$350	\$1000	
Soil Conditioner	\$75	\$100	\$350	\$1000	
Trencher	\$75	\$100	\$350	\$1000	



GRAPPLE - INDUSTRIAL



LANDSCAPE RAKE



AUGER

LOADER ATTACHMENTS:	1/2	Day	Week	4-Week
Auger Drive only	\$94	\$125	\$375	\$938
Auger with Bit	\$124	\$165	\$525	\$1238
Auger Bit (only)	\$30	\$40	\$150	\$300
Auger Ext (2' or 4')	\$15	\$20	\$60	\$105
Bucket (ONLY)	\$38	\$50	\$225	\$600
Beak (jaw)	\$60	\$89	\$275	\$785
Breaker 350 lbs.	\$188	\$250	\$750	\$2250
Breaker 550 lbs.	\$195	\$260	\$780	\$2340
Breaker 750 lbs.	\$225	\$300	\$1125	\$3150
Bushhog bd 60"	\$188	\$250	\$908	\$2566
Bushhog 72" -Open Faced	\$188	\$250	\$906	\$2566
Concrete Bucket -1/2 yard	\$69	\$89	\$311	\$890
Cold Planer - (14" W) Lo Flo	\$171	\$229	\$801	\$2289
Forks (Pallet)	\$34	\$45	\$169	\$428
Grapple- Root or Industrial 66"	\$89	\$119	\$416	\$1189
Grapple- Root or Industrial 74"	\$89	\$119	\$416	\$1189
Harley Rake 72"	\$132	\$175	\$613	\$1410
Harley Rake 84"	\$132	\$175	\$613	\$1410
Landplane / Eliminator Rake	\$59	\$79	\$276	\$789

Roller Vibratory / Tamper	\$169	\$225	\$844	\$2363
Rock hound 5B - 60"	\$112	\$149	\$596	\$1490
Rock hound 6B - 72"	\$112	\$149	\$596	\$1490

Stump Bucket 56"	\$66	\$89	\$295	\$689
Sweeper 60" & 72" w/ PU	\$97	\$129	\$451	\$1289
Sweeper Angle Broom 72" w/ PU	\$89	\$119	\$416	\$1189
Tiller 60"	\$105	\$139	\$487	\$1391
Trencher	\$105	\$139	\$487	\$1315

EXCAVATORS:	Width	Weight	HP	1/2	Day	Week	4-Week
E10	28" / 38.6"	3,526	10 /13.3	\$169	\$225	\$844	\$2363
E20	39"	4,306	13.9	\$184	\$245	\$919	\$2328
E26	60"	5,666	27	\$199	\$265	\$995	\$2588
E32 **	60"	7,858	33.2	\$201	\$268	\$1005	\$2311
E35zt **	69"	8,143	33.2	\$224	\$298	\$1118	\$2832
E42CAB & TH	69"	9,722	41.8	\$261	\$348	\$1305	\$3306
E45zt **	77.2"	10,553	41.8	\$220	\$304	\$1029	\$2925
E50 Cab	77.2"	10,677	48.8	\$247	\$362	\$1174	\$3363
E55 Cab & Th	77.2"	12,271	48.8	\$308	\$408	\$1530	\$3876
E63 Cab & TH	78"	13,556	52.3	\$340	\$453	\$1584	\$4518
E85 Cab & Th	91"	19,689	57	\$419	\$558	\$2093	\$5500

\*\* Add \$\$ for: Cab/ AC on above \$15 \$20 \$100 \$300  
Thumb on above \$15 \$20 \$85 \$250

EXCAVATOR ATTACHMENTS:	1/2	Day	Week	4-Week
Auger with Bit	\$124	\$165	\$525	\$1238
Breaker 350 lbs.	\$188	\$250	\$750	\$2250
Breaker 550 lbs.	\$195	\$260	\$780	\$2340
Breaker 750 lbs.	\$225	\$300	\$1125	\$3150
Breaker 1200 lbs.	\$300	\$400	\$1400	\$4000
Bushhog 48"	\$169	\$225	\$844	\$2363
Tamper Plate 24"	\$122	\$163	\$570	\$1629

MISCELLANEOUS ITEMS:	1/2	Day	Week	4-Week
Trailer w/ Equip	\$57	\$75	\$250	\$675
Trailer w/o Equip	\$75	\$100	\$350	\$1000

Add 15% for Damage Waiver on the above rental rates.

Call Rental @ (865) 588 -8115 for monthly specials. 04/24