

# 2020 BOBCAT RENTAL RATES

(RATES SUBJECT TO CHANGE WITHOUT NOTICE)

Tire Loaders	Width	Weight	HP	1/2	Day	Week	4-Week
S450 (1350# Lft.)	68"	5,235	49	\$122	\$171	\$565	\$1607
S530 (1850# Lft.)	60"	6,480	49	\$129	\$181	\$599	\$1707
S570** (1950# Lft.)	68"	6,480	61	\$145	\$201	\$670	\$1907
S590Cab (2100# Lft.)	68"	6,735	66	\$161	\$231	\$744	\$2118
S630Cab (2180# Lft.)	74"	7,707	74	\$190	\$281	\$880	\$2507
S650Cab (2690# Lft.)	74"	8,327	74	\$178	\$238	\$831	\$2389
S750Cab (3200# Lft.)	74"	8,730	85	\$204	\$281	\$950	\$2707
S770Cab (3350# Lft.)	74"	9,175	92	\$212	\$291	\$985	\$2807
XXXX (XXXX# Lft.)	XX"	XXXXX	XX	\$XXX	\$XXX	\$XXX	\$XXXX
XXXX (XXXX# Lft.)	XX"	XXXXX	XX	\$XXX	\$XXX	\$XXX	\$XXXX
XXXX (XXXX# Lft.)	XX"	XXXXX	XX	\$XXX	\$XXX	\$XXX	\$XXXX
**Solid Tire Option on Above Add...				\$15	\$20	\$100	\$300

Hi-FLO Loader	Width	Weight	HP	1/2	Day	Week	4-Week
S570HCab (26.7 GPM)	68"	6,220	61	\$162	\$241	\$770	\$2207
S630HCab (30.5 GPM)	74"	7,707	74.3	\$182	\$301	\$844	\$2405
S770HCab (36.6 GPM)	74"	9,175	92	\$249	\$331	\$1157	\$3298
T750HCab	80"	10,327	85	\$284	\$381	\$1321	\$3768
T770HCab	80"	10,327	92	\$332	\$442	\$1545	\$4407
T770HCab w/ Forestry Mulcher (Package)				\$667	\$889	\$3111	\$8889
T870HCab w/ Forestry Mulcher (Package)				\$712	\$949	\$3321	\$9489
Hi Flow Attach:	Mulcher (only) - 60" W			\$300	\$400	\$1400	\$4000
	Mulcher FAE - 72" W			\$320	\$425	\$1487	\$4249
	Cold Planer - (24" W)			\$194	\$259	\$925	\$2627
	Cold Planer - (40" W)			\$221	\$295	\$1032	\$2949
	Stump Grinder - 26" head			\$119	\$159	\$556	\$1589
	Wheel Saw (2.5"W -16"D)			\$194	\$259	\$925	\$2627

Track Loaders	Width	Weight	HP	1/2	Day	Week	4-Week
T110 (1100# lift)	50"	5,202	41.8	\$152	\$201	\$694	\$1868
T450 ** (1400# lift)	60"	6,148	61.1	\$182	\$251	\$845	\$2407
T550 ** (1995# lift)	68"	7,633	66	\$197	\$271	\$915	\$2607
T590Cab (2100# lift)	68"	7,870	66	\$217	\$301	\$1039	\$2976
T595Cab (2250# lift)	68"	8,000	74	\$236	\$315	\$1102	\$3149
T630Cab (2570# lift)	74"	8,742	75	\$234	\$331	\$1120	\$3207
T650Cab (2570# lift)	74"	9,440	75	\$257	\$341	\$1195	\$3407
T740Cab (3200# lift)	80"	10,000	74	\$264	\$351	\$1230	\$3507
T750Cab (3325# lift)	80"	10,327	85	\$272	\$361	\$1265	\$3607
T770 (3475# lift)	80"	10,327	92	\$251	\$344	\$1169	\$3315
T870HCab (3525# lift)	84"	12,678	99	\$411	\$549	\$1921	\$5489

MINI TRACKS	Width	Weight	HP	1/2	Day	Week	4-Week
MT52	36"	2,506	18.8	\$92	\$136	\$440	\$1237
MT55	44"	2,692	23.5	\$100	\$147	\$475	\$1337
MT85	45"	3,110	25	\$119	\$167	\$551	\$1569

MT Attachments:	1/2	Day	Week	4-Week
Auger w/ Bit	\$72	\$95	\$332	\$949
Backhoe M06	\$59	\$89	\$276	\$789
Breaker -150 Lbs.	\$82	\$119	\$382	\$1090
Bush hog -44"	\$82	\$119	\$382	\$1090
Forks	\$18	\$25	\$60	\$140
Grapple	\$59	\$89	\$311	\$789
Horizontal Bore (2.5"+ 3.5")	\$71	\$95	\$332	\$949
Soil Conditioner	\$59	\$89	\$311	\$789
Stump Grinder -18" head	\$71	\$95	\$332	\$949
Tile Scraper	\$59	\$79	\$245	\$727
Tiller	\$67	\$89	\$311	\$789
Trencher	\$67	\$89	\$311	\$789

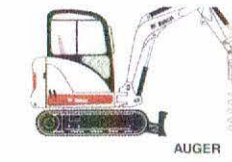
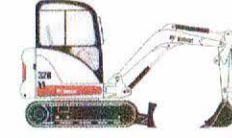
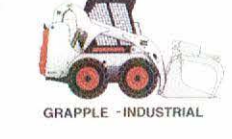
3400 4 WD	54"	1400#	32HP	\$72	\$96	\$339	\$966
CARLTON STUMP GRD	XXXXX		35	\$225	\$299	\$995	\$2495
CARLTON CHIPPER 9"	XXXXX		35	\$274	\$365	\$1095	\$2750

LOADER ATTACHMENTS:	1/2	Day	Week	4-Week
Auger Drive only	\$59	\$89	\$284	\$789
Auger with Bit	\$81	\$119	\$389	\$1089
Auger Bit (only)	\$22	\$30	\$105	\$300
Auger Ext (2' or 4')	\$7	\$9	\$21	\$50
Bucket (extra)	\$15	\$25	\$112	\$225
Beak (jaw)	\$60	\$89	\$275	\$785
Breaker 350 lbs.	\$122	\$163	\$570	\$1629
Breaker 550 lbs.	\$143	\$189	\$661	\$1889
Breaker 750 lbs.	\$179	\$239	\$836	\$2389
Brushcat 60"	\$139	\$189	\$661	\$1890
Brushcat 72"	\$149	\$199	\$696	\$1989
Bushhog 72" -Open Faced	\$169	\$225	\$788	\$2251
Concrete Bucket -1/2 yard	\$69	\$89	\$311	\$890
Cold Planer - (14" W) Lo Flo	\$171	\$229	\$801	\$2289
Forks (Pallet)	\$25	\$35	\$75	\$150
Grapple- Root or Industrial 66"	\$85	\$109	\$380	\$1089
Grapple- Root or Industrial 74"	\$89	\$119	\$416	\$1189
Harley Rake 72"	\$86	\$115	\$416	\$1155
Harley Rake 84"	\$95	\$125	\$445	\$1255
Landplane / Eliminator Rake	\$59	\$79	\$276	\$789
Post Driver -10" Max	\$169	\$225	\$788	\$2251
Purifier (air)	\$15	\$20	\$75	\$200
Roller Vibratory / Tamper	\$133	\$177	\$620	\$1771
Rock hound 5B - 60"	\$85	\$109	\$380	\$1085
Rock hound 6B - 72"	\$92	\$119	\$425	\$1185
xxxxxx	\$xx	\$xx	\$xxx	\$xxx
xxxxxx	\$xx	\$xx	\$xxx	\$xxx
Stump Bucket 56"	\$66	\$89	\$295	\$689
Sweeper 60" & 72" w/ PU	\$97	\$129	\$451	\$1289
Sweeper Angle Broom 72" w/ PU	\$89	\$119	\$416	\$1189
Tiller 60"	\$105	\$139	\$487	\$1391
Trencher	\$97	\$129	\$425	\$1289

EXCAVATORS:	Width	Weight	HP	1/2	Day	Week	4-Week
418zt / 324	28" / 38.6"	3,526	10 / 13.3	\$137	\$201	\$670	\$1907
E20	39"	4,306	13.9	\$152	\$211	\$705	\$2007
E26	60"	5,666	27	\$154	\$222	\$726	\$2067
E32 **	60"	7,858	33.2	\$168	\$241	\$775	\$2207
E35zt **	69"	8,143	33.2	\$182	\$251	\$846	\$2409
E42CAB & TH	69"	9,722	41.8	\$224	\$298	\$1041	\$2989
E45zt **	77.2"	10,553	41.8	\$220	\$304	\$1029	\$2925
E50 Cab	77.2"	10,677	48.8	\$247	\$362	\$1174	\$3363
E55 Cab & Th	77.2"	12,271	48.8	\$280	\$391	\$1300	\$3708
E60/63 Cab & TH 78"	13,556	52.3	\$340	\$453	\$1584	\$4518	
E85 Cab & Th 91"	19,689	57	\$407	\$541	\$1892	\$5398	
** Add \$\$ for: Cab/ AC on above				\$15	\$20	\$100	\$300
Thumb on above				\$15	\$20	\$85	\$250

EXCAVATOR ATTACHMENTS:	1/2	Day	Week	4-Week
Auger with Bit	\$81	\$119	\$389	\$1089
Breaker 350 lbs.	\$122	\$163	\$570	\$1629
Breaker 550 lbs.	\$143	\$189	\$661	\$1889
Breaker 750 lbs.	\$179	\$239	\$836	\$2389
Breaker 1200 lbs.	\$224	\$299	\$1046	\$2989
Bushhog 42"	\$139	\$189	\$661	\$1890
Tamper Plate 24"	\$122	\$163	\$570	\$1629

MISCELLANEOUS ITEMS:	1/2	Day	Week	4-Week
Trailer w/ Equip	\$48	\$60	\$210	\$600
Trailer w/o Equip	\$75	\$100	\$350	\$1000
Dump Trailer	\$95	\$125	\$395	\$1165



Add 10% for Damage Waiver on the above rental rates.

Call Rental @ (865) 588-8115 for monthly specials. 9/19